

Year 4: Salvador Dali

Salvador Dali



Salvador Dali was best known for his work on surrealism. He used the visions he saw in his dreams and created them through art.

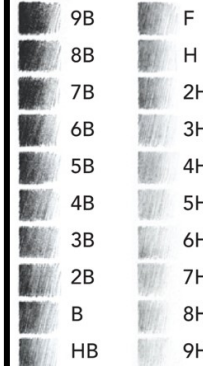


The Persistence of Memory



Metamorphosis of Narcissus

There are lots of different grades of pencils we can use to add shade and tone to our art.

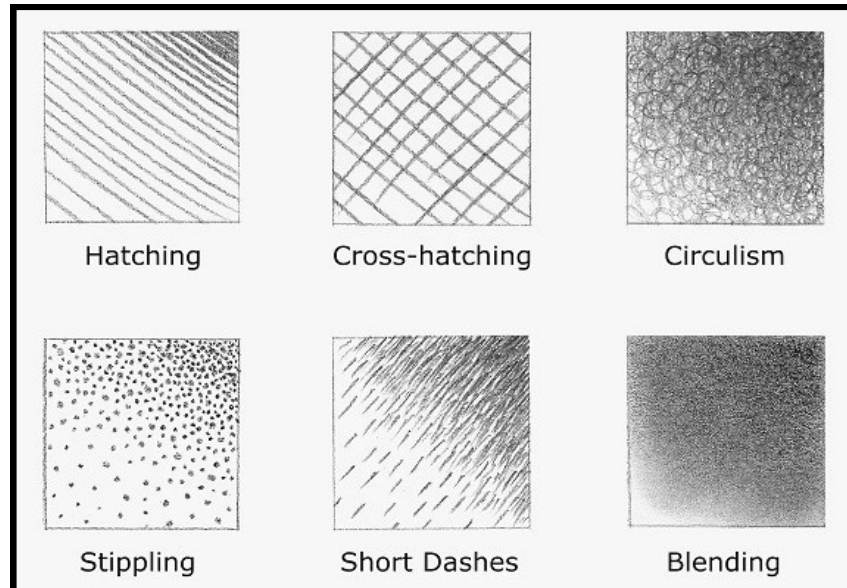


We can use different shading techniques to add light or dark to drawings.

Throughout this topic, you will learn:

- How to use proportion to check the sizes of objects in your art.
- Experiment with different materials such as charcoal, pencil, pen, pastels.
- About the grades of pencils and how they can lighten or darken your drawing.
- Use line, tone and colour to improve your drawings.

These are some of the shading techniques you will use:



Vocabulary

charcoal	Black, crumbly material made from carbon.
cross hatching	Lines in a cross, close together to look like a block colour.
distance	The gap between items, objects or people.
grades	The lightness or darkness of a media, usually a pencil.
hatching	Lots of lines close together to look like a block colour.
pastels	A powdered crayon used for colour.
proportion	How the different sizes of something compare to another.
Salvador Dali	A Spanish artist who focused on art that was beyond reality.
still life	A painting or drawing of items or objects.
surrealism	Things that are not real.
texture	The different feel of art or media.
tone	The lightness or darkness of art.

CRC Article 13: All children have the right to freedom of speech and expression.
Article 29: All children have the right to develop their talents and abilities.

