

Year 6: Express Yourself!

We will be exploring different colours and techniques that can be used to create art that tells a story. We are going to create art that highlights our personality and allows us to express ourselves. We have already explored an artist who expressed herself and others through her art. **Kathe Kollwitz** is best known for exploring emotions and messages through her art.

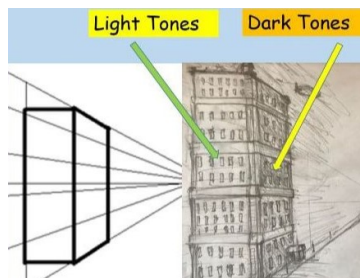


The skills we are going to use or learn are:

- to apply tonal techniques and complex colour theory to our own work;
- to explain our own style;
- to explore and use a range of techniques, and explain why we have chosen these techniques;
- to show understanding of colour theory to create a balanced painting;
- to begin to use perspective in both abstract and real life art.

Using perspective

We can use different tones to add perspective to our work. This is done by using light, dark, warm and cool tones.



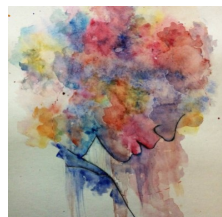
This can be done in real life and abstract art.

Vocabulary

balanced painting	The use of artistic elements.
colour theory	The art of using colour and mixing harmonising colours.
control	How media is used within a piece of art.
harmonising	To produce a pleasing visual piece.
real-life art	To represent something as it appears.
tonal contrast	Created when light and dark tones are used alongside each other.
tonal techniques	Ensuring media compliments each other. Harmonising colours.

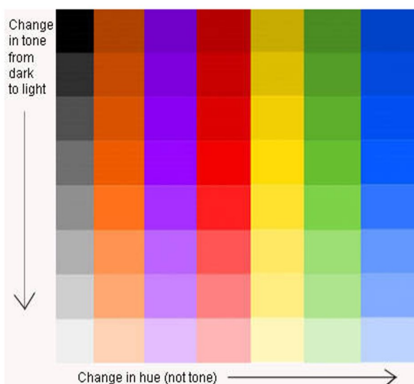
What is self-expression?

Self-expression is about communicating your individuality. Self-expression can help you to showcase your true self - your story, your thoughts, feelings and emotions.

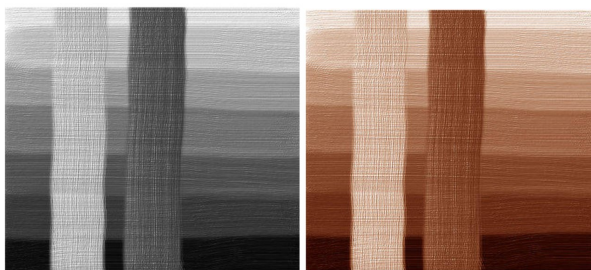


Applying different tones

Every colour can make lots of different tones.



Tone is very important as it sets the way we see something.



How light or dark a tone or value appears also depends on what other tones are near it. The two vertical bands of tone in the images above are of a consistent tone, yet seem to get darker or lighter depending on how light or dark the background is.

Complex colour mixing

Mixing colours to make the different tones of green can be difficult because you don't use black and white!

Here is a rule to help:
lighter tone of green; add yellow, not white.
darker tone green; add blue, not black.



When you want to lighten a red, you'll most likely automatically reach for white paint and end up with a range of pinks. Instead, try mixing red with a light yellow instead of only white.



Different tones of one colour can create a picture.

CRC Article 13: All children have the right to freedom of speech and expression.
CRC Article 29: All children have the right to develop their talents and abilities.

