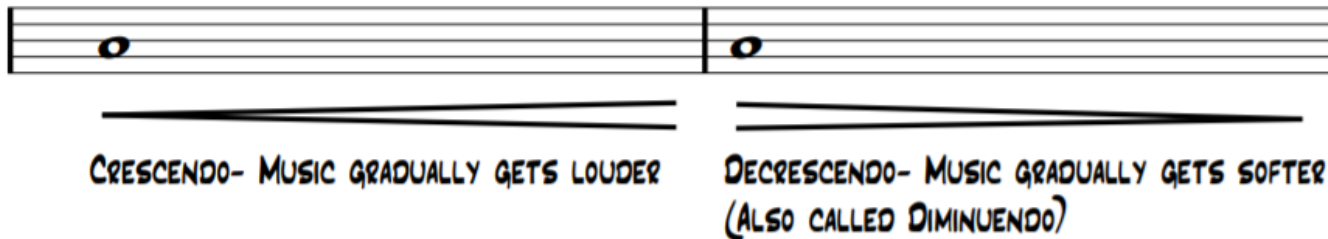
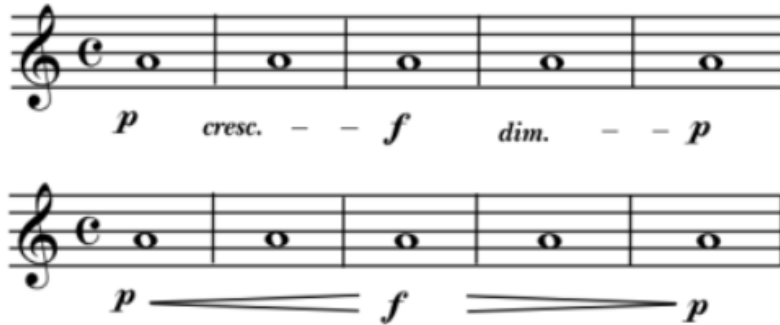


Year 4: Music

Lean on me

Soul music is a popular music genre that originated in the African American community throughout the United States in the 1950s and early 1960s.



What is Gospel music?

Gospel music is religious or Christian music where people sing about God in many different styles, e.g. Folk, Urban, Modern Worship, Blues and Country. Gospel music can be traced back to the 18th century. In the midst of very difficult lives, slaves used songs to inspire inner strength and courage.



Bill Withers was born on July 4th 1938. He is an American musician. One of his most famous songs is 'Lean On Me', which he recorded in 1972. It is a soul song that has been covered and interpreted as a gospel song because of its lyrics.

Vocabulary

Gospel	Gospel music is a style of Christian music.
hook	A musical idea, often a short riff, passage, or phrase, that is used in popular music to make a song appealing
Soul	A popular music genre that originated in the African American community throughout the United States in the 1950s and early 1960s.
structure	It describes how the different sections in a piece of music are positioned together.
unison	All at once.

- Lean On Me by Bill Withers
- He Still Loves Me by Walter Williams and Beyoncé
- Shackles by Mary Mary
- Amazing Grace by Elvis Presley
- Ode To Joy Symphony No 9 by Beethoven
- Lean On Me by The ACM Gospel Choir

CRC Article 29: All children have the right to have their talents developed to the full.