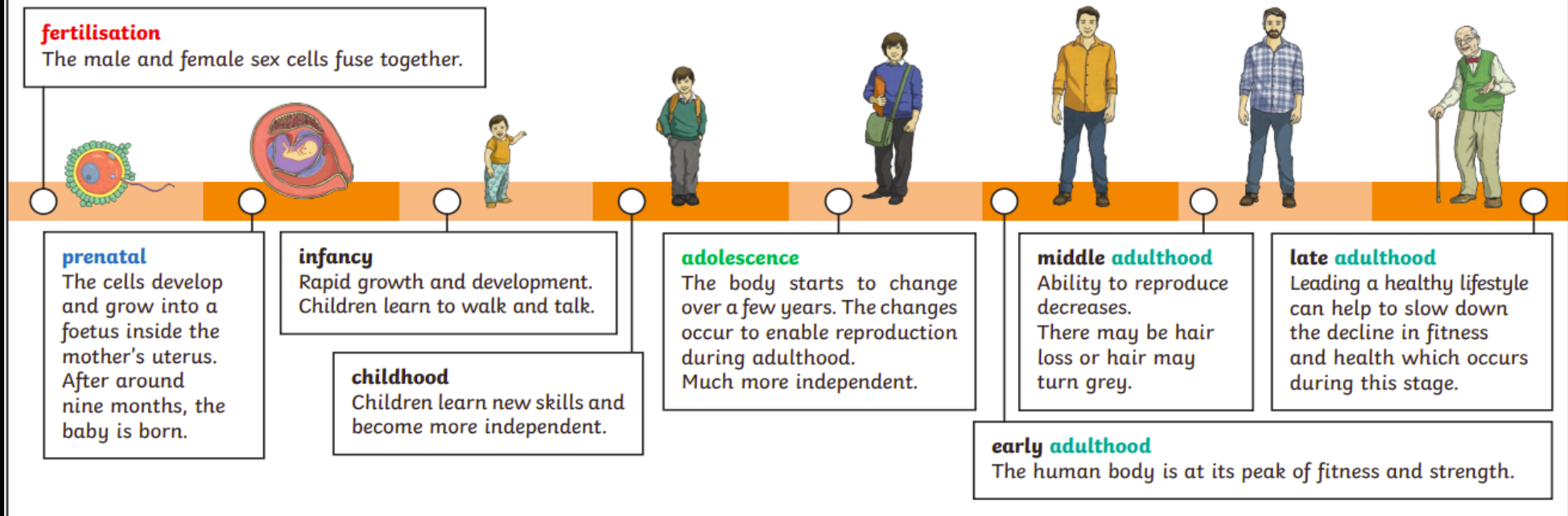


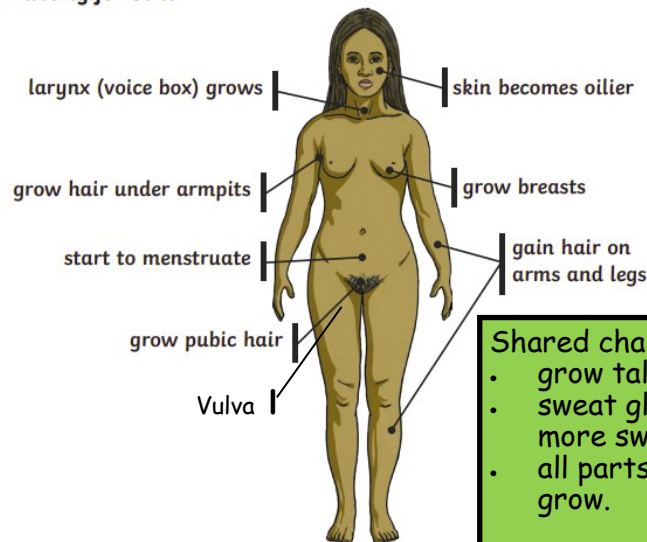
Year 5: Why is communication important as a scientist and a human?

The changes as a human develops into old age.

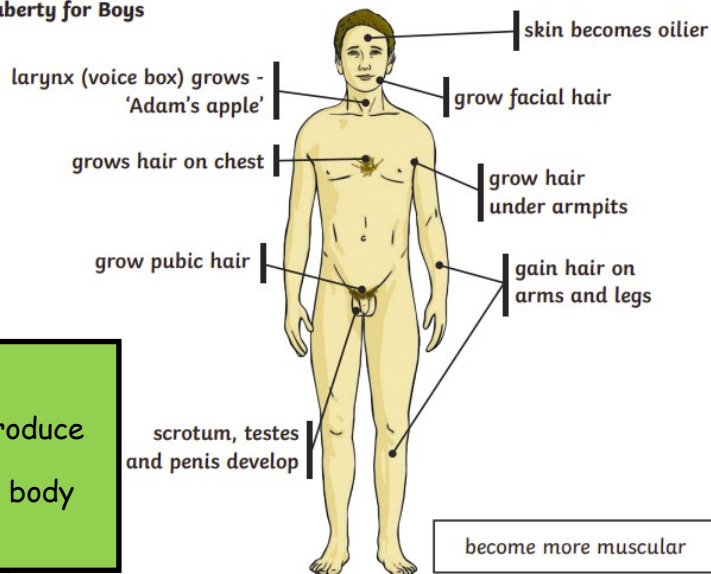


As a child enters **adolescence** their body will grow and change in some ways. This change is known as **puberty**. During **puberty** there are both physical (what you can see) and emotional changes. During this learning you will find the scientific skill of **questioning** very useful.

Puberty for Girls



Puberty for Boys



Shared changes:

- grow taller;
- sweat glands produce more sweat;
- all parts of the body grow.

Vocabulary

genitals	The outer sexual organs. The penis and vulva.
internal	Inside the body.
ovaries	Internal pairs of organs in the female that produce the egg.
penis	The male genital. Used for urinating.
puberty	The change from child to adult.
reproductive organs	The organs that allow an animal to create offspring.
testicles	Two round male sex organs that produce sperm.
vagina	The part of the female that connects the vulva (external) to the uterus (internal).
vulva	The external part of the female's sex organs.

CRC Article 17: All children have the right to find out information providing it is safe.

