

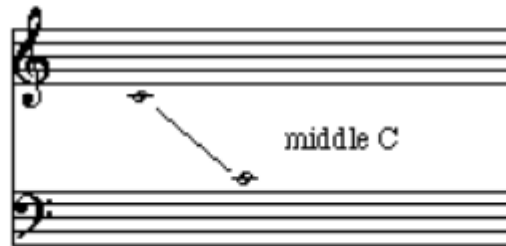
Year 2: Music

I Wanna Play in a Band

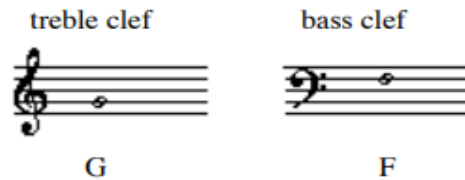
Queen - a very popular rock group.



We can combine of treble and bass staff into a **grand staff**. An example of the grand staff with middle C marked is shown below.



We know which line or space is a particular note by the clef at the beginning of the staff.

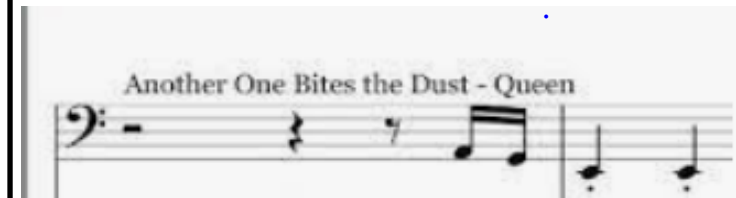


The key difference between bass and treble is that *bass sounds have the lowest frequencies whereas treble sounds have the highest frequencies.*

Did you know...

The basic characteristics of rock music are: electric and bass guitars, loud drums, catchy bass lines and powerful vocal hooks.

Below is the bass clef. This is different to the treble clef. The bass clef is a type of musical clef used by instruments that play low-pitched notes.



Vocabulary

band	A group of people who play music together.
beginning	The first part.
end	The final section.
middle	Between the beginning and the end.
notation	Written symbols to represent music.
Rock	Music that is loud, has a very strong beat and is played with electric guitars, bass guitars and drums. You can play air-guitar to this music!

CRC Article 29: All children have the right to have their talents developed to the full.

